

# YOUR NEXT SUPPLY CHAIN PARTNER!

*These top-rated customers  
rely on Midwest Precision's  
superior machining capabilities:*

- BATTELLE
- DRS TECHNOLOGIES
- DUPONT
- ELBIT SYSTEMS LTD
- EXCELITAS
- HARRIS
- HONEYWELL
- LOCKHEED MARTIN
- PARKER
- RAFAEL
- SIEMENS
- STANLEY BLACK  
& DECKER
- SWAGELOK

**SPECIAL THANKS TO  
ALL OF OUR KEY  
CUSTOMERS**

*We produce complex parts, assemblies and  
coordinate all steps required while providing  
the best value and shortest possible lead time.*

## **STRICT QUALITY ASSURANCE**

for Aerospace, Power Generation,  
Precision Industrial, Defense and  
other industries.

## **ENGINEERING ASSISTANCE**

throughout the development process  
for prototypes, reduce costs and  
effectively minimize lead times.

## **EXPERTS IN**

Machining Complex Parts  
Working with Difficult Materials  
Close Tolerances  
Low Volume through Production Quantity

## **DEMANDING MARKETS**

Aerospace / Defense  
Instrumentation  
Engineered Products  
Energy / Power Generation  
Medical Equipment

**MADE IN THE  
USA** 

## **ACCREDITATION:**



# Midwest Precision

## **MIDWEST PRECISION**

34700 Lakeland Blvd.  
Eastlake, Ohio 44095

**T** 440-951-2333

**F** 440-951-2336

**E** sales@midwestllc.com

**MIDWESTLLC.COM**

**SERVING DEMANDING  
MARKETS FOR  
OVER 60 YEARS!**



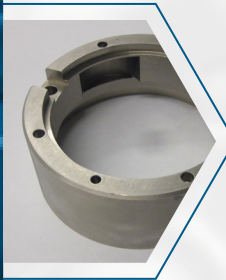
Our dedicated team  
will provide you with  
**TURNKEY  
PRODUCTS**  
including mechanical  
and electro-mechanical  
assemblies, and precision  
machined components.

*Each Midwest Precision customer is assigned a dedicated  
Project Manager, as a sole point of contact for managing  
their orders from start to finish!*

**INNOVATIVE, EXPERIENCED & PROFICIENT**

*Founded in 1953 with over 200 years of engineering  
experience on staff, we are constantly investing  
in our facility and utilize robotic technology  
for self loading equipment.*

## **IN-HOUSE CAPABILITIES & SERVICES**



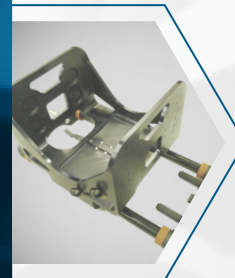
### **PRECISION CNC TURNING**

- Multiple CNC Lathes with bar capacity from .25" - 4" and Chucking capacity to 14"
- Precision turning to .0004"
- Multi-Axis Turn/Mill Capabilities with Live Tooling
- Gantry loading mill/turn lathes



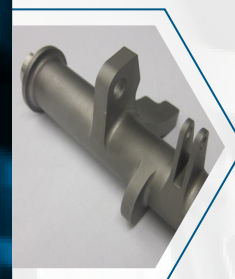
### **PRECISION CNC MILLING**

- Several Vertical Machining Centers, table sizes from 16" x 34" to 25" x 90" including 4 axis machining
- Horizontal Machining Centers; w/4 axis capability including a multi-pallet pool with unattended operation (16" x 16" x 24" through 25" x 25" x 38")
- Jig Bores to .0003" tolerance



### **ASSEMBLY & PROGRAM MANAGEMENT**

- Fully tested subassemblies and assemblies
- Supply Chain Consolidation with Complete traceability from Raw Material to Finished Goods
- Turnkey Responsibility of Special Processes
- EDM / Honing / Laser Marking / Surface Grinding



### **WORLD CLASS MANUFACTURING**

- Continuous Improvement Culture
- Extensive use of lean methods
- Utilize 6S practices
- Inventory management
- Ship to stock programs
- Climate-controlled facility with advanced equipment
- Several approved outside processing suppliers
- Utilize the latest CAD software to design and build work holding fixtures in-house

## **EXPERTS IN MACHINING**

Aluminum  
Extrusions  
Plastics

Castings  
Forgings  
Stainless Steel

Copper  
Nickel Alloys  
Titanium